



**Credit Valley
Conservation**
inspired by nature

Greening Corporate Grounds

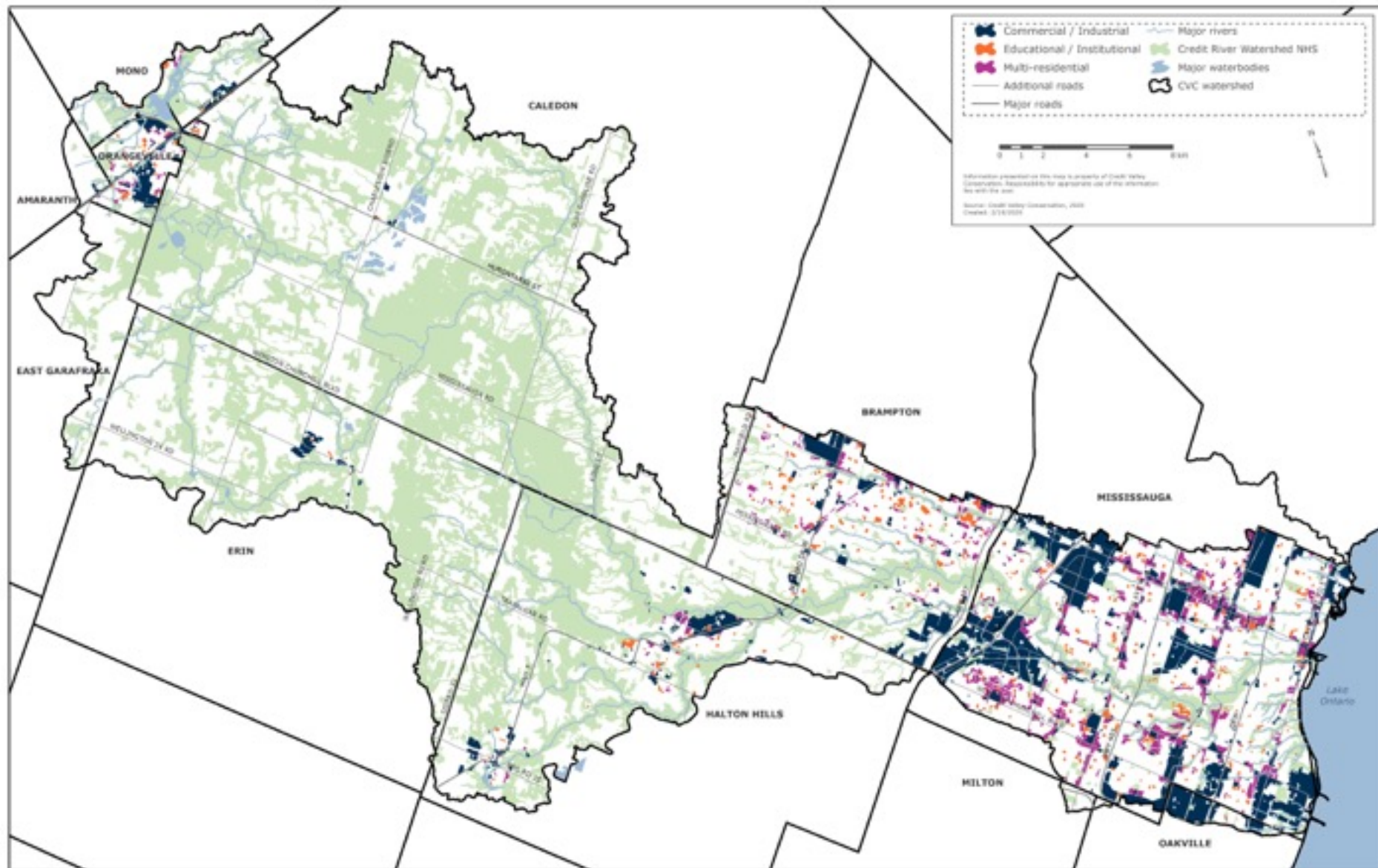
Corporate Landowners Take the Lead by Investing in Nature

Shifting The Paradigm - Nature Works!

March 11, 2020

Deborah Kenley, MLA
Senior Coordinator
Greening Corporate Grounds





Natural Heritage System with Urban Landuse

Future-proof your business. Invest in nature.

Your success is dependent upon environmental sustainability.
Take the lead. Change the way you landscape your property.
Your future bottom line will thank you.



GCG members have the power to protect the environment, while making a public statement that they care about the health and well-being of our communities.



Greening Corporate Grounds

Program Services and Support

From Vision to Implementation



Sample Concept Plan

- ① Retention Pond
- ② Detention Pond
- ③ Meadow
- ④ Woodland
- ⑤ Prairie Meadow
- ⑥ Rain Gardens
- ⑦ Wildlife Centre
- ⑧ Community Garden

“ GCG has the expertise to design and support implementation. They also have the resources to help secure funding and engage stakeholders and the community. ”

Kevin Mitchell, Director Property, Planning and Approvals,
CRH Canada Group Inc.

Greening Corporate Grounds Member Resources



Credit Valley Conservation
inspired by nature



Cawthra Rd. - vehicle maintenance building entrance

GREEN INFRASTRUCTURE Repaving Considerations

Musket Transport
5546 Southdown Rd, 2215 Royal Windsor Dr. & 2421 Cawthra Rd.

Prepared by: Greening Corporate Grounds
Prepared for: Musket Transport

April 25, 2019

1255 Old Derry Road, Mississauga, ON, L4W 4M1 | 905.461.1700-470-2222 | 77 905-668-5957 | F 905-670-2222

GCG Reports

Planting Pollinator Plantings

Comparative Cost: \$0000



Buckeye Wood Bee



Monarch Butterfly



Eastern Tiger Swallowtail Butterfly

Pollination is an essential process of plant life. Pollen must be transferred between plants allowing them to produce seeds that become the next generation. Animals that help pollinate flowers are known as pollinators.

Recent years have seen a sharp decline in pollinator populations due to climate change, habitat loss (including the loss of native plants) and pesticide overexposure. This could eventually lead to a decline in plant species, impacting ecosystems and our own food security. Pollinators are responsible for pollinating over 36 per cent of the food we eat. By creating pollinator gardens on your property, you can help support these important pollinators while adding colour and interest to your landscape.

Some common native pollinators that you attract to your property:

- Common Eastern Bumblebee
- Monarch Butterfly
- Eastern Tiger Swallowtail Butterfly
- Buckeye Wood Bee
- Hummingbird Clearwing Moth
- Frigid Leaf-cutter Bee

Other benefits of Pollinator Gardens include:

- Creates habitat for native birds, animals and insects
- Contributes to habitat linkages and safe movement corridors for wildlife
- Reduces/eliminates water use for irrigation
- Improves soil, air and water quality
- Improves soil, air and water quality
- Improves groundwater infiltration and reduces flooding
- Costs less than planting annuals every year
- Reduces soil erosion
- Improves site aesthetics

1255 Old Derry Road, Mississauga, Ontario L4W 4M1
T 905-670-2422 | F 905-668-5957 | F 905-670-2222 | CVC-02



Credit Valley Conservation
inspired by nature

GCG Fact Sheets

green brief

See Your Sights on Sustainability

IMPACT | BEST PRACTICE



Long-term vision for long-term benefit

Investing now in green infrastructure projects on your property will help you build climate resilience and generate cost savings in the future. The key to achieving the best return on investment is having a long-term vision and planning ahead. Don't know how to get started? We do. Find out [HERE](#).

LEADERSHIP | SHOWCASE



Volunteer and vision-driven sustainability

The Unitarian Congregation in Mississauga's (UCH) long-term vision for sustainability, along with a team of dedicated volunteers, have transformed this old farm property into an urban oasis built around sustainable landscaping practices. [READ MORE](#)

KNOWLEDGE | IN THE NEWS



Planting and planting for a greener future

Planting native trees is being heralded as the [natural solution](#) for reducing carbon and mitigating climate change (it's not just the math [here](#)). Responsible tree planting in our urban communities can reduce heat island effect and improve water quality. There are opportunities on most properties. [Ask us here](#).

Green Brief

Education and Engagement

We offer members:

- Presentations, webinars
- Workshops
- Mini-charrettes
- Guided walks
- Planting events
- Maintenance events
- Habitat building activities
- Project signage



Mary Kay Cosmetics Planting Event



GCG Bird Walk



HP Habitat Box Building

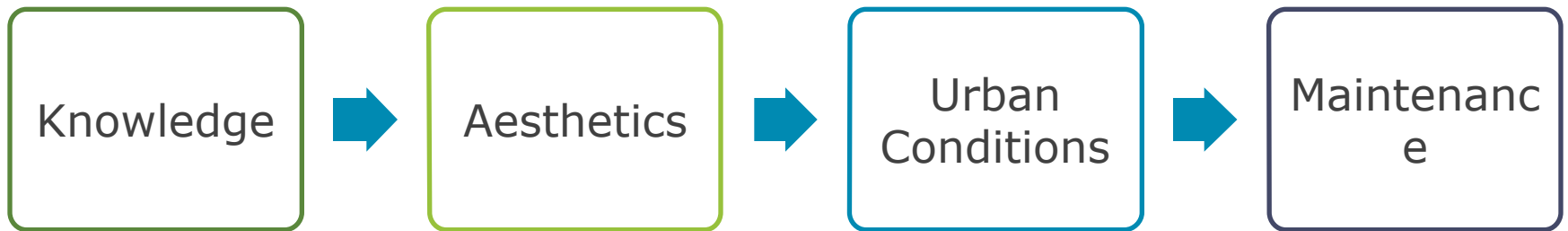
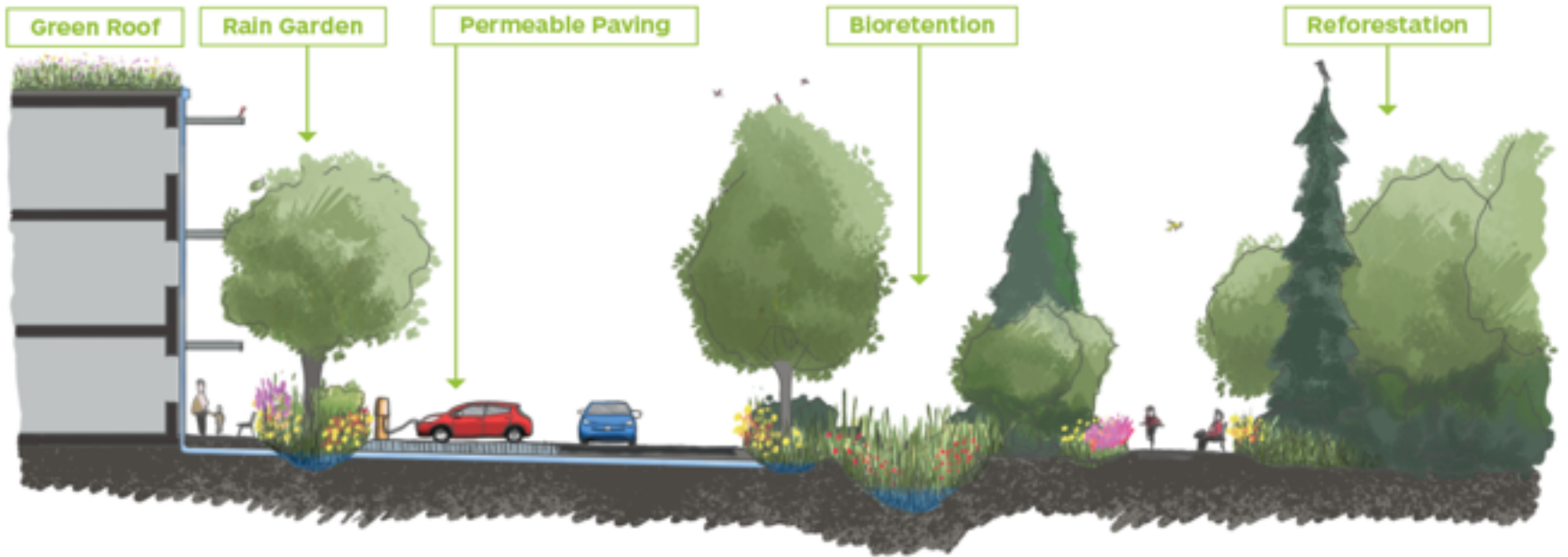


TJX Seed Ball Making

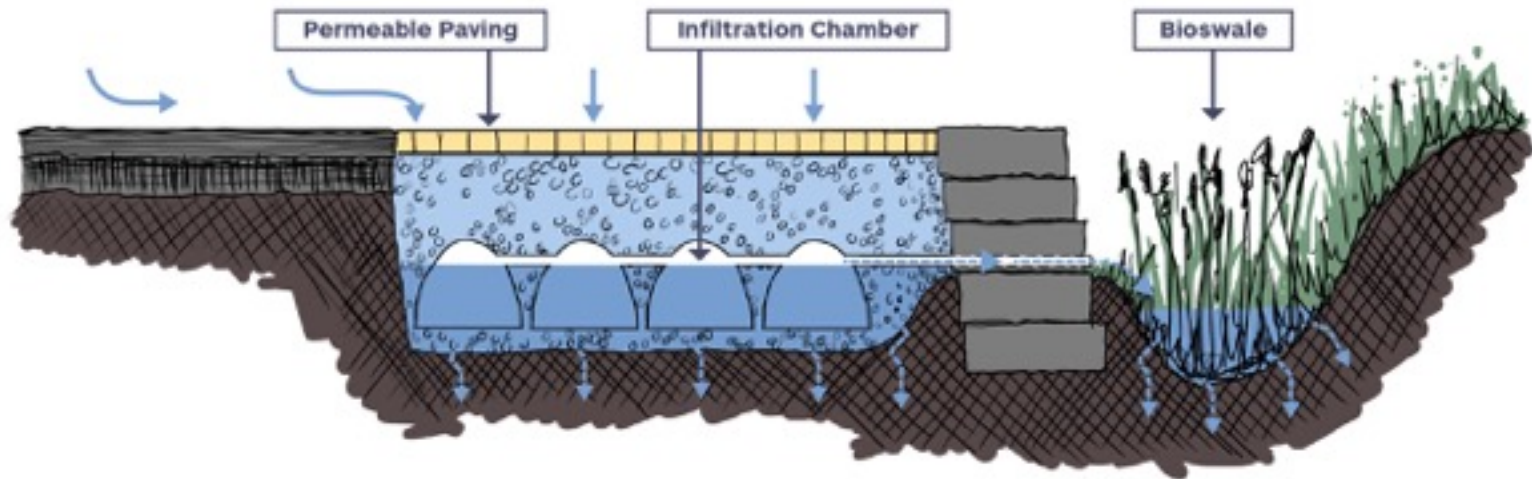
“Climate change could be the most important long-term trend for investors. It will produce winners and losers over the next decades, and all investors should consider how they will ‘weatherproof’ their portfolios to mitigate the risks”

*Todd Millay
Climate Change Investing Heats Up
Forbes, December 19, 2016*

Barriers to Sustainable Landscaping Adoption



Barriers to Lot Level LID Implementation



Knowledge



Timing



ROI

Change the way you landscape

Reduce Your Stormwater Charge

Slow your property's peak stormwater flows, decrease run-off volumes and prevent water pollution with sustainable landscaping.

Sustainable landscaping can help you qualify for the **Mississauga Stormwater Credit**. Sustainable landscaping means using environmentally-friendly landscaping practices on your property like planting native species, reducing conventional lawn cover, or implementing green infrastructure like green roofs and permeable paving.

From vision to implementation greeningcorporategrounds can help

Greening Corporate Grounds has been helping businesses develop and implement their sustainable landscaping visions since 2009. We're offering **free enrollment** to Mississauga businesses in the Credit River Watershed through our partnership with the City of Mississauga to support their Stormwater Credit Program. Get access to technical expertise and a suite of design services worth up to \$5000 when you sign up.

30270-1-0074

greening**corporate**grounds

Join now. Your future bottom line will thank you.



Credit: CRW Canada

To learn more or book your free consultation, contact us today.

gcg@cvc.ca
905-670-1615 ext 439
cvc.ca/gcg



MEMBER TALKS



Deborah Kelley
Senior Conservation
Specialist
Mississauga
Credit Valley
Conservation

TAKE SUSTAINABILITY OUTSIDE

Credit Valley Conservation's Greening Corporate Grounds, the City of Mississauga and the Mississauga Board of Trade challenge businesses to think outside the box when it comes to corporate social and environmental sustainability.

Science proves our climate is changing, so is the corporate landscape. Business leaders have realized corporate social responsibility (CSR) and sustainability initiatives are critical to business success, and in some environments sustainability practices are now common operating procedures. There are still opportunities for innovative business to capture the competitive advantage by setting new standards for what it means to do good business.

CONVENTIONAL CORPORATE SUSTAINABILITY
Since the late 1990s companies have increasingly integrated corporate sustainability practices into their business plans. Practices like reducing waste and energy consumption, increasing employee safety, and managing the supply chain are all common. These practices are essential for long-term success, but they are not enough to ensure a company's long-term viability. To truly make a difference, companies need to go beyond the basics and embrace a more holistic approach to sustainability.

CONSIDER TAKING YOUR NEXT CSR INITIATIVE OUTSIDE
Conventional and social have sustainability commitments (SDG) at their core. However, embracing sustainability means going beyond and addressing the environmental and social impacts of business operations. This includes reducing carbon footprint and building green infrastructure on their corporate grounds. From planting trees to installing permeable paving, these initiatives are hard and soft solutions that benefit the community, manage the supply chain, and build the reputation of the company. By taking the lead in sustainability, companies can demonstrate their commitment to the environment and their community.

ARE YOU UP FOR THE CHALLENGE?
Credit Valley Conservation's Greening Corporate Grounds program helps businesses make CSR solutions with sustainable practices. From trees to permeable paving, we work with businesses to determine the best opportunities on their corporate grounds. We provide technical expertise and support to help you implement your plan. We also offer a suite of design services to help you create a sustainable and resilient corporate landscape. For more information, visit www.cvc.ca/gcg.

TAKE SUSTAINABILITY OUTSIDE
Credit Valley Conservation's Greening Corporate Grounds program helps businesses make CSR solutions with sustainable practices. From trees to permeable paving, we work with businesses to determine the best opportunities on their corporate grounds. We provide technical expertise and support to help you implement your plan. We also offer a suite of design services to help you create a sustainable and resilient corporate landscape. For more information, visit www.cvc.ca/gcg.

POLLUTION PREVENTION: It's Just GOOD Business

In this half-day session, you'll learn how pollution prevention can prevent flooding, build resiliency and benefit your business.

[Click to Register](#)



You're invited February 22

Winter maintenance costs more than you think

Discover business solutions that reduce maintenance costs and environmental impact.

Register & learn more at cvc.ca/gcgWebinar

FREE WEBINAR
Thurs, Nov. 28, 2019, 2 p.m.
Registration required



[REGISTER TODAY!](#)

Enhanced Mississauga Outreach 2018-2020

Landowners Take Action!



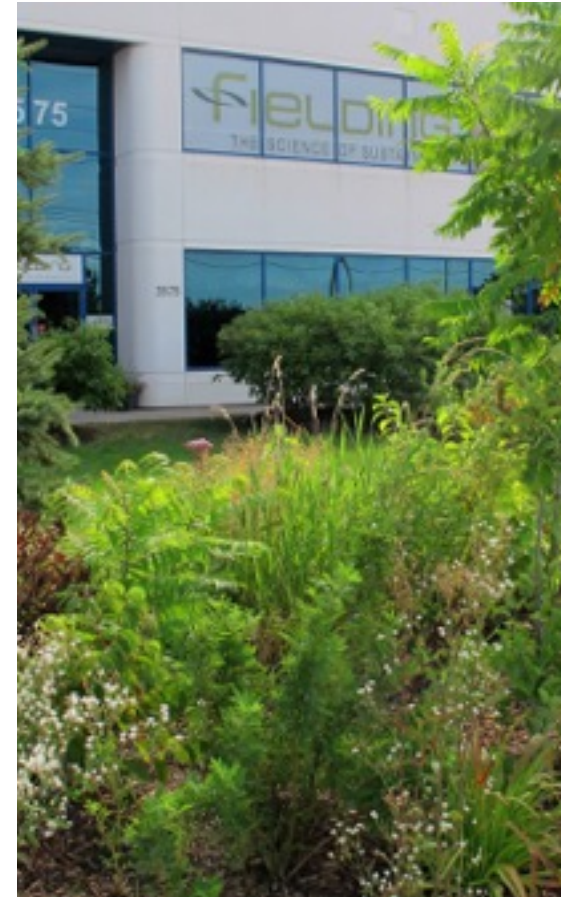
2008-2020



Volunteers
1706



Plants 15,160
Grasslands 2
Meadows 3

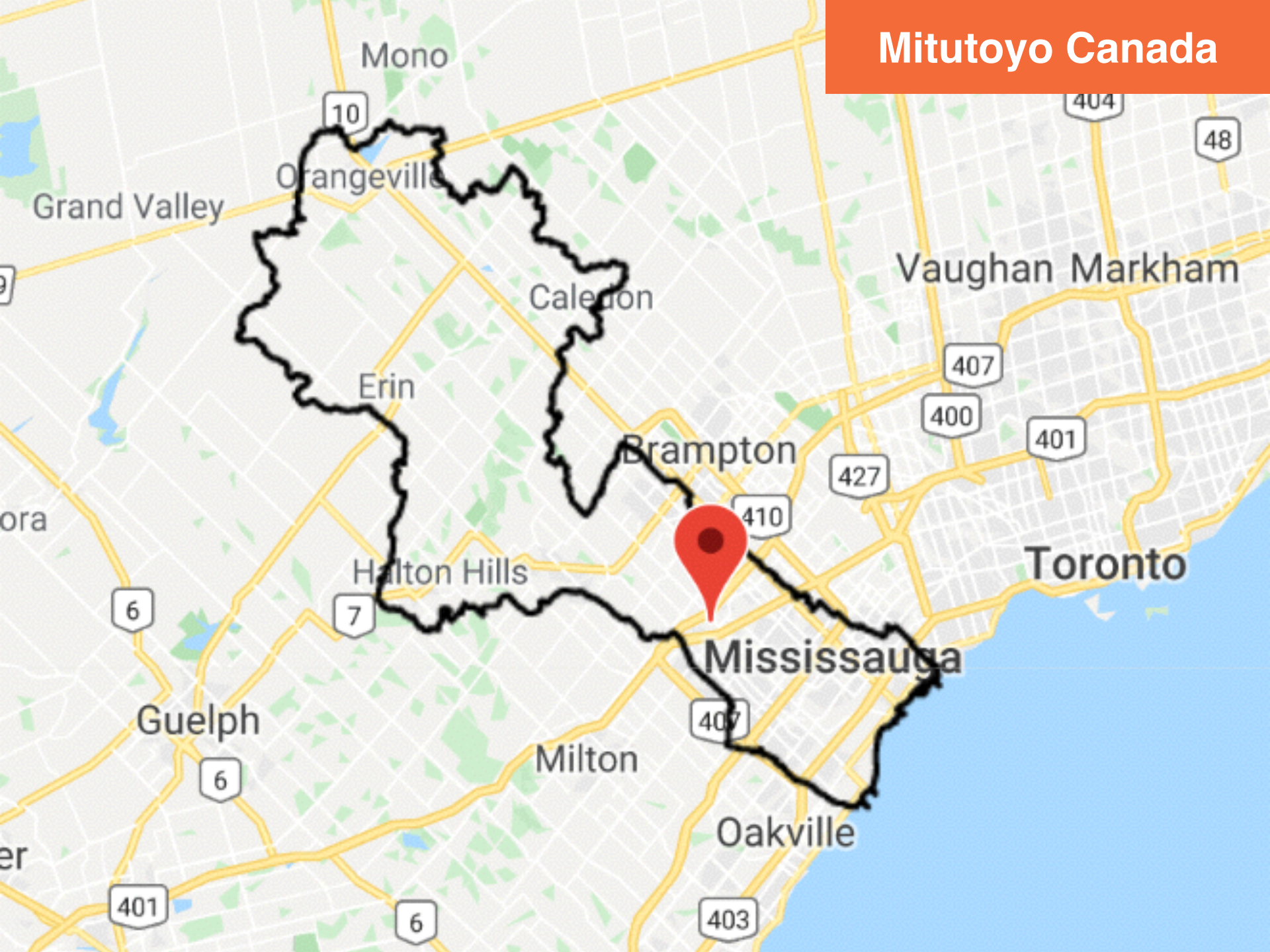


Landowners
Engaged
50



2121 Meadowvale Road, Mississauga, ON L5N 5N1

Mitutoyo Canada





Meadowvale Boulevard

Creditview Road

2.31 ACRES
0.94 HECTARES



**Let Their Vision Be
Their Mission!**

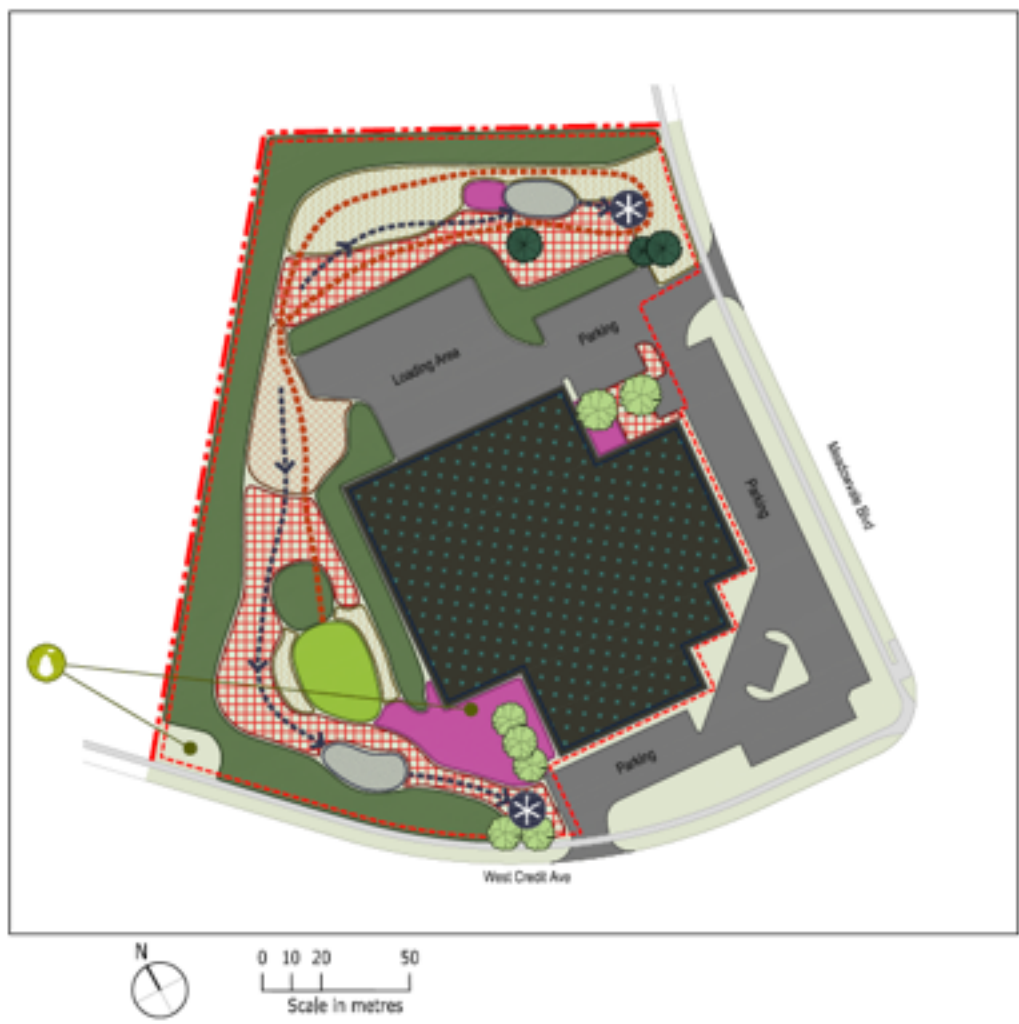
DESIGN CHARRETTE

MARCH 2018

WORD EXERCISE

- RELAXING TIME
- TRANQUILITY
- COMMUNITY / MTG. SPACE
- ZEN
- INVITING
- EXERCISE
- ENV. PUBLIC RELATIONS
- COLOURFUL
- LEARNING
- PEACEFULNESS
- FOOD COMPOST
- FUN
- COMMEMORATION
- LUSH
- ENGAGEMENT.





Existing Conditions

	Property Line		Building		Tree - Conifer
	Project Boundary		Storm Drain		Tree - Deciduous

Recommendations

	Tree & Shrub Planting		Bioretention Short-term water storage		Urban Agriculture
	Tallgrass Prairie Plantings		Enhanced Grass Swale		Cultural Uses Patio, Seating, etc.
	Prairie or Meadow Plantings		Blue Roof Short-term water storage		Conventional Lawn
	Pollinator Plantings		Path/Trail		

Notes

- These site recommendations are based on preliminary assessments and observations. Before considering any site changes or construction implementations, a licensed engineer or other licensed land planning professional should be consulted.
- This conceptual plan is not to scale. All measurements are approximate and area boundaries are for illustrative purposes only.

419 TREES AND SHRUBS PLANTED



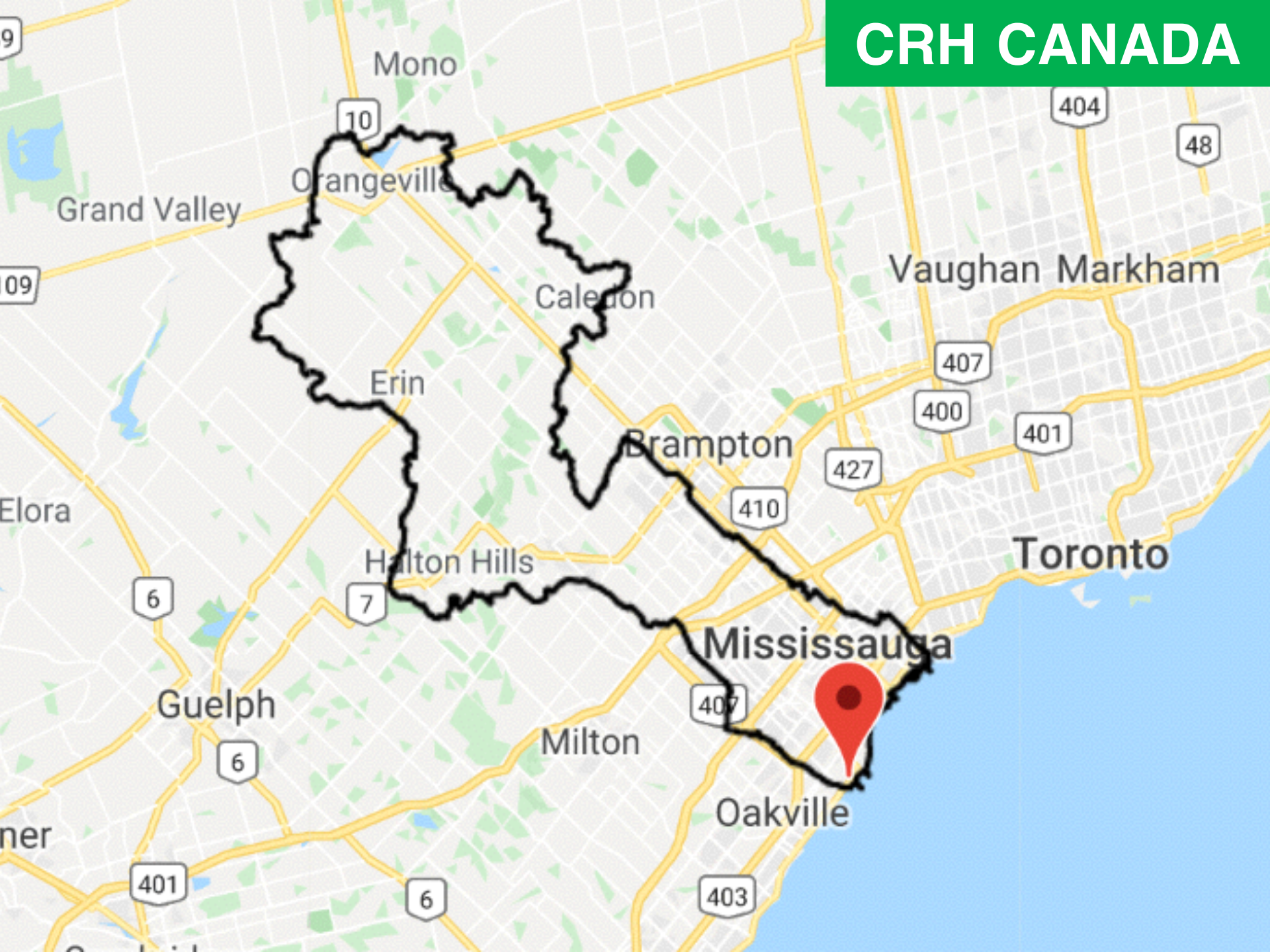
Project Installed: Fall 2018
CVC Terrestrial and Restoration Management
50% subsidy on corporate grounds



**Project Installed: Spring 2019
CVC Terrestrial and Restoration Management
Prairie Meadow**



CRH CANADA





MISSISSAUGA CEMENT PLANT

2391 Lakeshore Rd W, Mississauga, ON L5J 1K1



**CRH Lake Ontario Flyway Habitat Project
Funded By ECCC HSP: 2015-2018**

Flyway Habitat Restoration

Restoring Habitat for Migratory Birds

CRH Canada - Mississauga, Ontario



Woodland

This woodland will have a minimum 60% canopy cover with greater than 75% deciduous trees, and will provide wildlife with shelter and food such as insects, nuts, and seeds.



Meadow

Meadows are diverse plant communities that are 30% grasses and 70% wildflowers that provide nesting areas, and produce seeds, nectar, and pollen for wildlife.



Thicket

Thickets are dense groups of shrubs and small trees that provide excellent protective shelter from predators. They also provide valuable food, such as berries, for wildlife.



Grassland

Grasslands are plant communities that are dominated by grasses with a small percentage of wildflowers. Grasslands provide nesting areas and produce seeds, nectar, and pollen for wildlife.



Restoration Area = 2 hectares



CRH Canada Group Inc.
Mississauga Cement Plant
2300 Lakeshore Rd. West
Mississauga, ON, L5N 1K1

In Partnership with:





CRH Canada Inc.: Pollinator Planting Event



**From Concrete to Coneflowers
CRH is leading the way**



The Clean50 Top15 Projects
GCG winner: 2018 and 2020

UNITARIAN



“UCM would recommend the Greening Corporate Grounds program as our property now is considerably more sustainable, the garden beds are beautiful, and the bioswale assists in preventing flooding when heavy rain falls occur. The support offered by CVC staff is practical and informed. It has allowed us to contribute to mitigation of impacts of climate change in our local community.”

Carole Berry, UCM Green Sanctuary Committee

questions?