

WATER INFLUENCED DESIGN SOLUTIONS

Representative projects

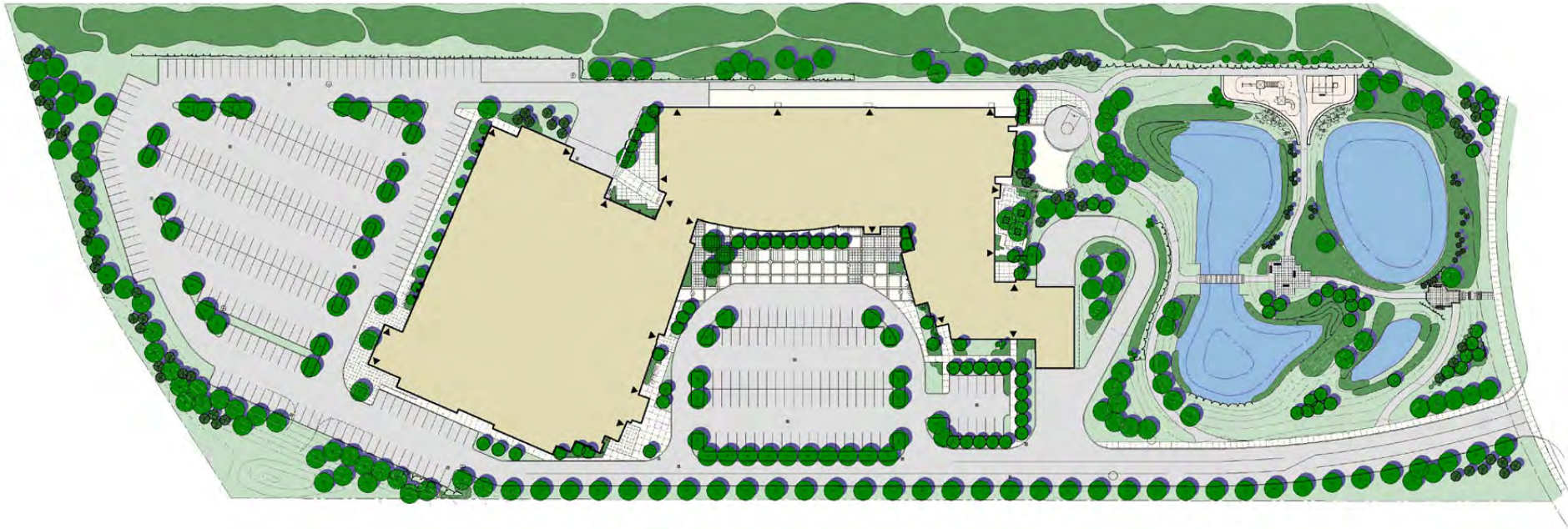
- Spadina Quay Wetland
- Guelph West Recreation Center
- O'Connor Park

Jim Melvin









Guelph West Recreation Center

Fish relocation and storm pond management







Site Preparation



Turtle Collection

Soil Banking







O'CONNOR PARK



224 Wallace Ave., Suite 321, Toronto, ON, Canada, M6H 1V7
 t 416.239.9818 f 416.239.1310 e design@pmalarch.ca www.pmalarch.ca

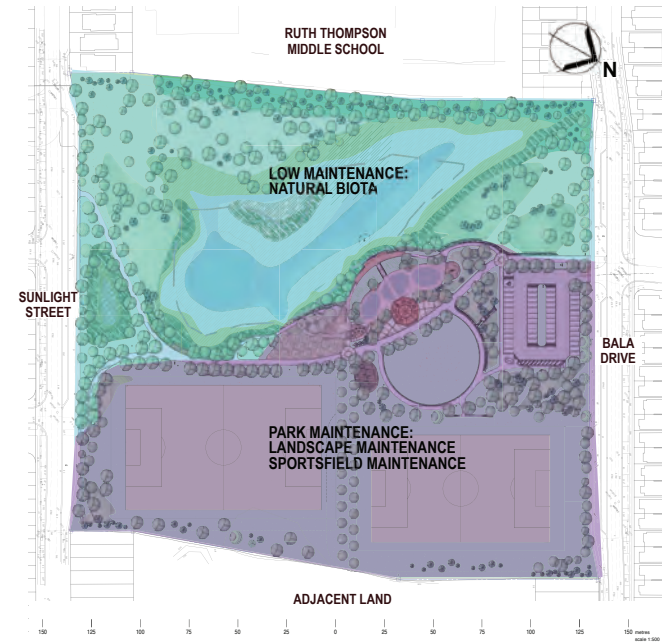


figure 1 - Park Map

NTS

park map
 iii

O'Connor Park
 PMA LANDSCAPE ARCHITECTS