

Indoor



A Matrix of Urban Nature



Outdoor



Discrete Features



Pathways, Connections, Ecosystems

Biophilic Pittsburgh

New 600
acre park
downtown

42% Tree
Canopy
Coverage

150 Swift
Towers



Three Rivers
Heritage Trail

South Shore
Waterfront
Park

Pittsburgh Water
Trail

Biophilic Design Elements

Neighborhood Vegetation

- Trees and Forest Canopy
- Living Walls and Green rooftops; Biosolar
- Landscaping (e.g.. Xeriscaping and use of Native Plants)
- Backyard Gardens and Natural Lawns
- Pocket Parks and Sidewalk Gardens
- Greening Sidewalks and Medians

Gardens, Food and Edible Landscaping

- Edible landscaping, Pollinator Corridors
- Community Gardens, Food forests

Stormwater and Hydrology:

- Rain Gardens and Green Streets
- Permeable Paving
- Stormwater Parks
- Wetlands and Water Features
- Stream Daylighting

Nature Education and Engagement

- Nature discovery stations

Habitat and Urban Wildlife

- Wildlife Corridors and Passages
- Habitecture

Parks and Civic Greenspaces

- Green pathways and trails
- Community gathering spaces
- Nature-Based Art

Dark Sky Lighting

Edmonton's Ecological Network



Edmonton, AB



Vitoria-Gasteiz Spain



Sidewalk Landscape Permits in San Francisco: 2000 Issued Since 2006



Jane Martin
Founder, *PLANT*SF*
(Permeable Landscapes As
Neighborhood Treasures)





Edmonton

Montreal

Toronto

Oslo

Edinburgh

Portland

St. Louis

Philadelphia

Birmingham

Barcelona

San Francisco

Pittsburgh

Washington, DC

Vitoria-Gasteiz

Chengdu

Phoenix

Austin

Milwaukee

Norfolk

Curridabat

Panama City

Singapore

Fremantle/Perth

Melbourne

Rio de Janeiro

Wellington

Biophilic Cities Network

Partner Cities

In Progress





theguardian

**MAKE IT
LIKE A CHEF**



TAP to see what our
appliances can do for you >

KitchenAid

environment



Birmingham joins San Francisco and Oslo in global green cities club

City famous for its industrial heritage joins network of 'biophilic' cities celebrated for



Pittsburgh Post-Gazette



BIOPHILIC CITIES

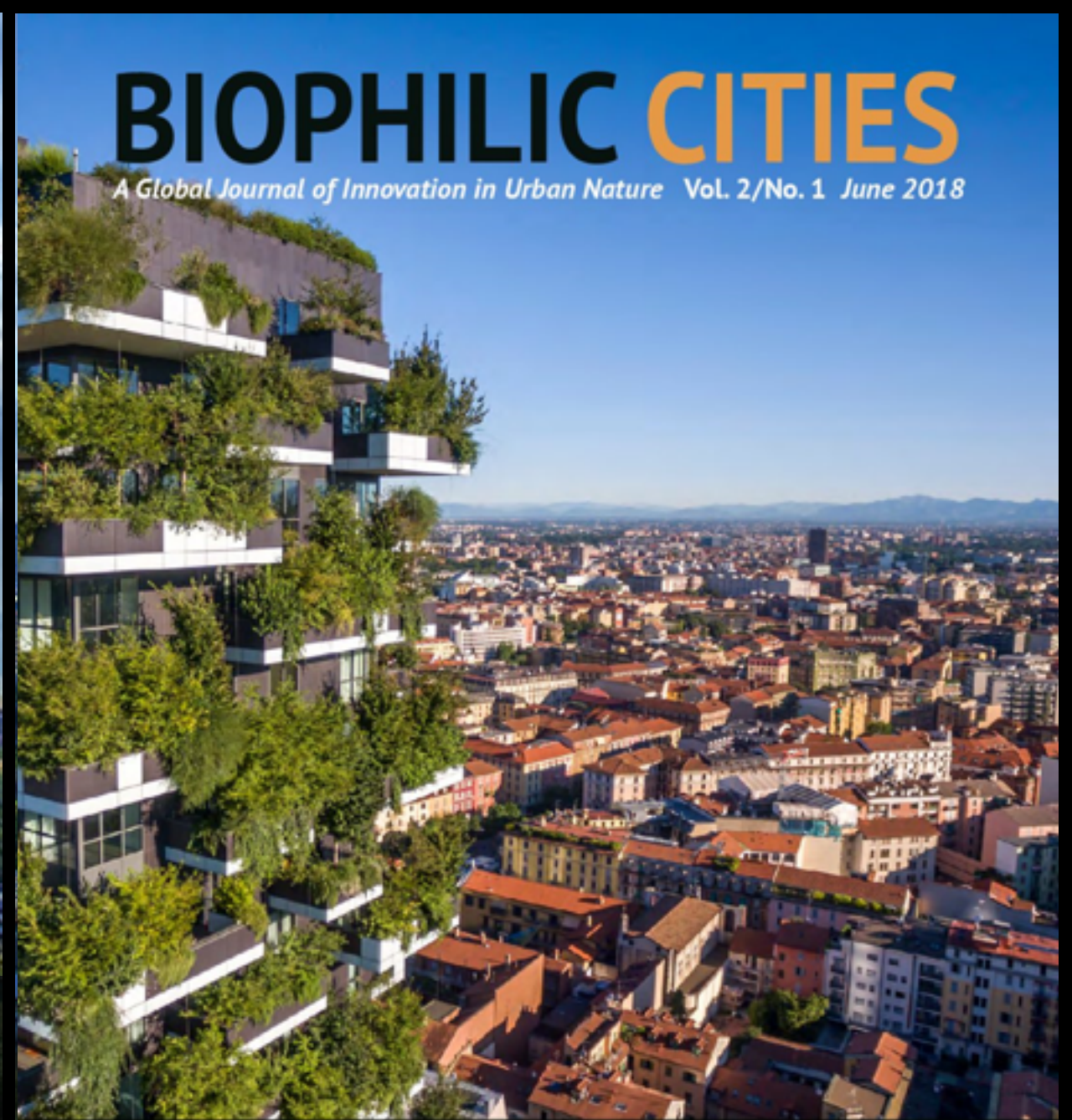
A Global Journal of Innovation in Urban Nature Vol. 1/No. 1 Feb. 2017



THE NATURE-FUL CITY Tim Beatley on the Hopeful Promise of Biophilic Cities
FEATURES Financing Biophilic Cities / Citizen Science and Biophilic Cities
PROJECT PROFILE The Butterfly Highway
PIONEER INTERVIEW Flourishing Expert, Corey Lee M. Keyes
GUEST PERSPECTIVE Dr. Robert Zarr on ParkRX

BIOPHILIC CITIES

A Global Journal of Innovation in Urban Nature Vol. 2/No. 1 June 2018



FEATURE Elevating Nature: Milan's Bosco Verticale / Reid Coffman
FEATURE Blue Cities for Better Health / Jenny Roe

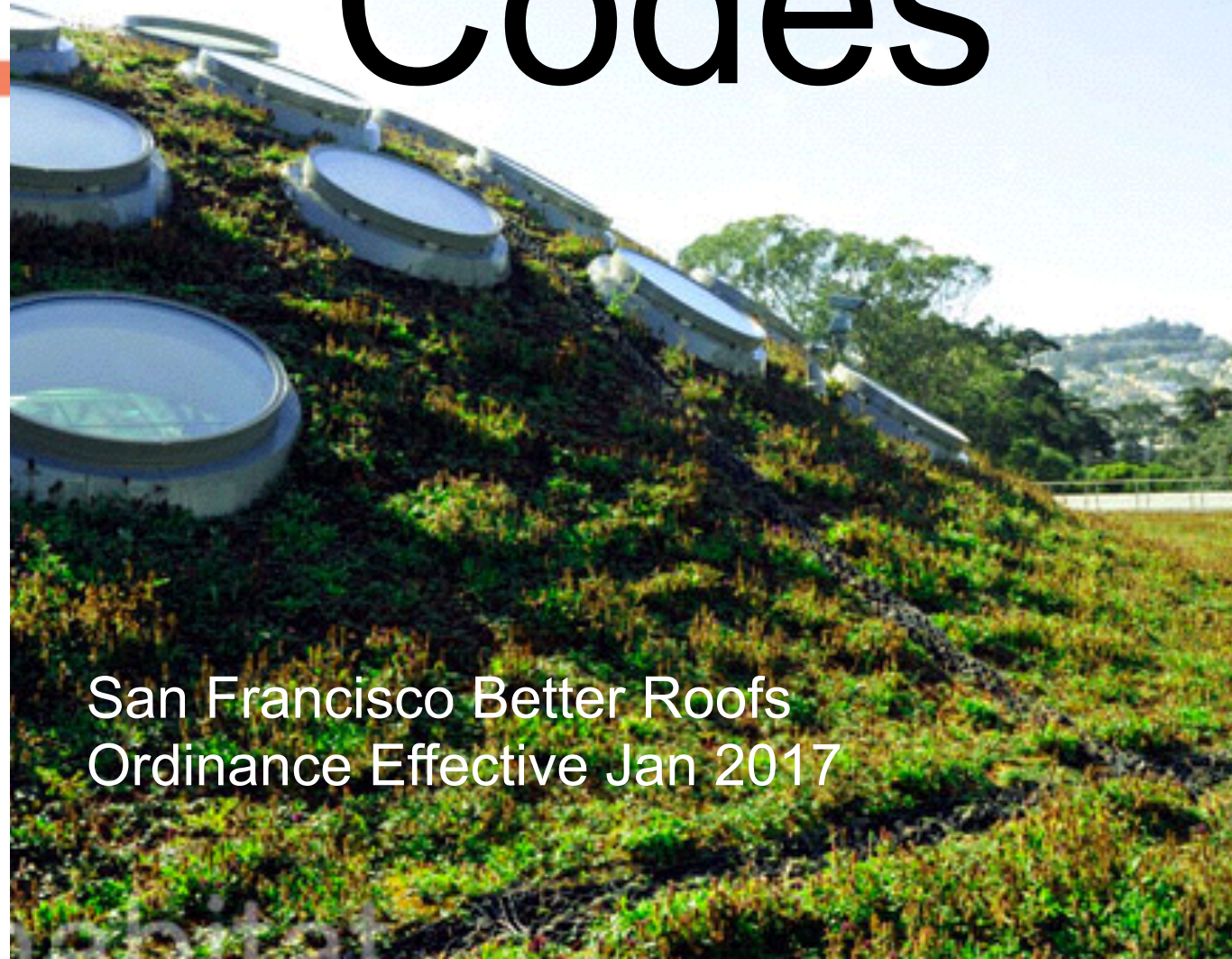


Standards for **Bird-Safe Buildings**

SAN FRANCISCO PLANNING DEPARTMENT | ADOPTED JULY 14, 2011



Biophilic Codes



San Francisco Better Roofs
Ordinance Effective Jan 2017



ABOUT

THE NETWORK

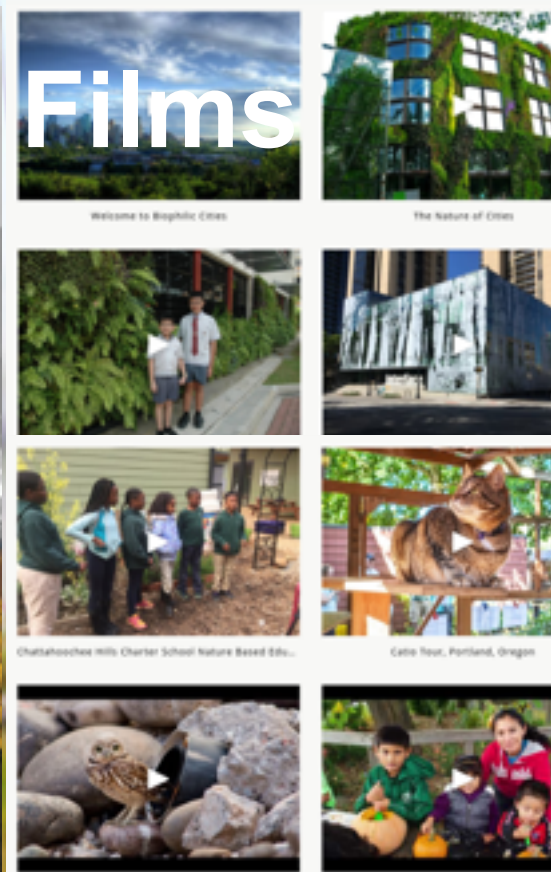
JOURNAL

FILMS

RESOURCES

Connecting Cities And Nature

WHY JOIN THE NETWORK? —





Visit the Biophilic Cities Network

<http://biophiliccities.org/>
beatlev@virginia.edu