



Environment
Canada

Environnement
Canada

Canada

How Much Habitat is Enough?

Third Edition



Significant impairment in stream

At a minimum, the greater of (a) 10% water quality and quantity is highly

- 21 guidelines and supporting text based on an extensive literature review
- Focus on federal terrestrial biodiversity portfolio: migratory birds, Species at Risk, Great Lakes related habitat, globally and nationally rare, etc.

- Forest, wetland, riparian/watershed & grassland
- well used in various NHS, watershed, and other land use plans as well by community groups, post-secondary classrooms, general conservation biology primer

30 adjacent to streams, greater depending on conditions

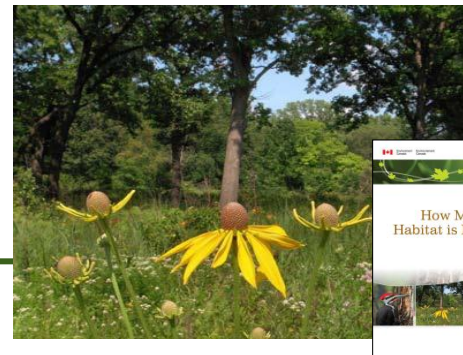
75% of stream length should be naturally vegetated

forest patches should be within 2 km of each other or other supporting habitat feature

cover.

Focus on restoring and creating grassland habitat in existing and potential grassland landscapes.

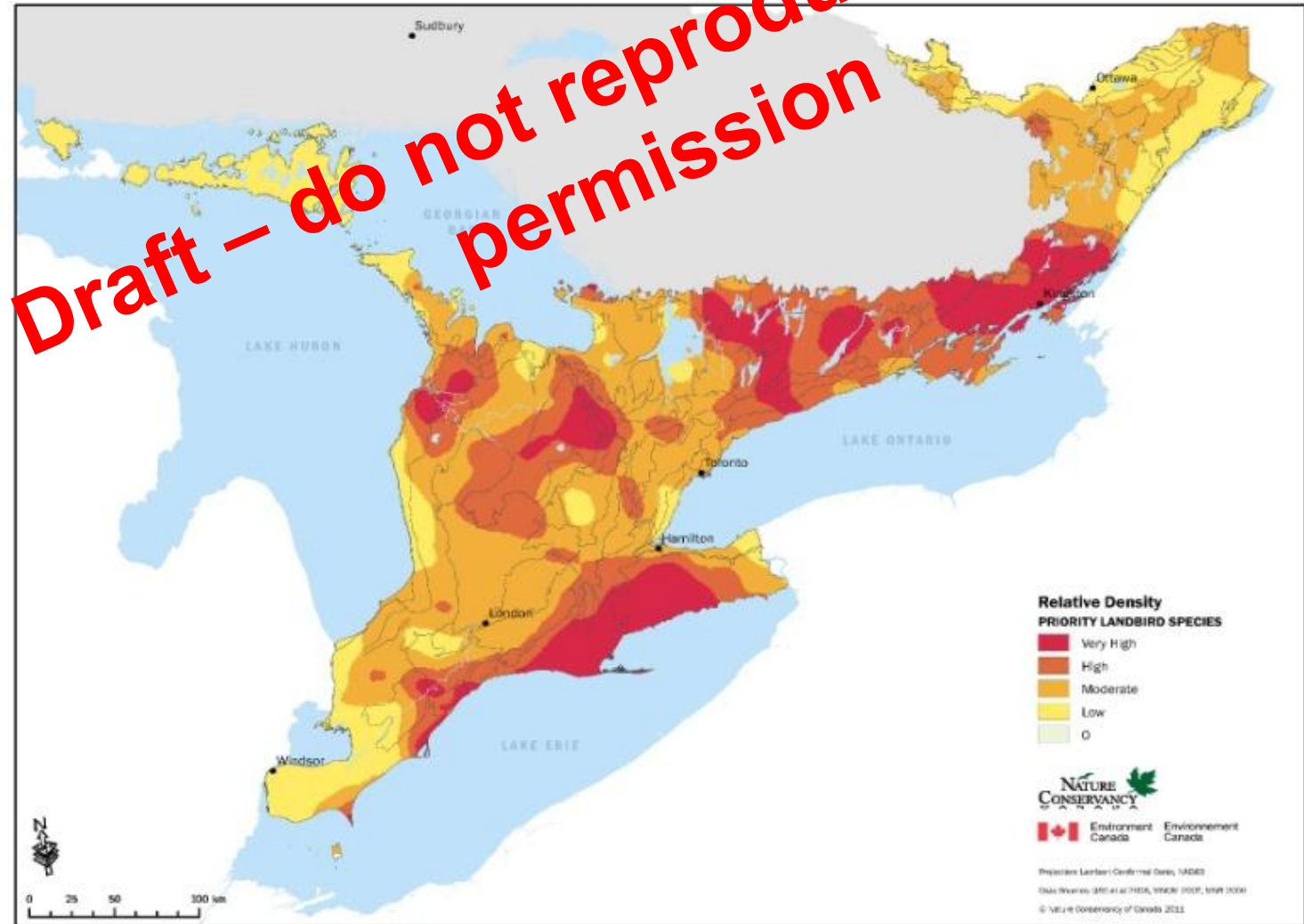
HMHE3 - Grasslands



Habitat Type and Area

- **Focus on restoring and creating grassland habitat in existing and potential grassland landscapes.**
- **Maintain, restore and create native grassland patches to their historic extent and type at a county, municipal and/or watershed scale considering past presence and current conditions.**

Tier 1 landscape assessment – ecozone scale results



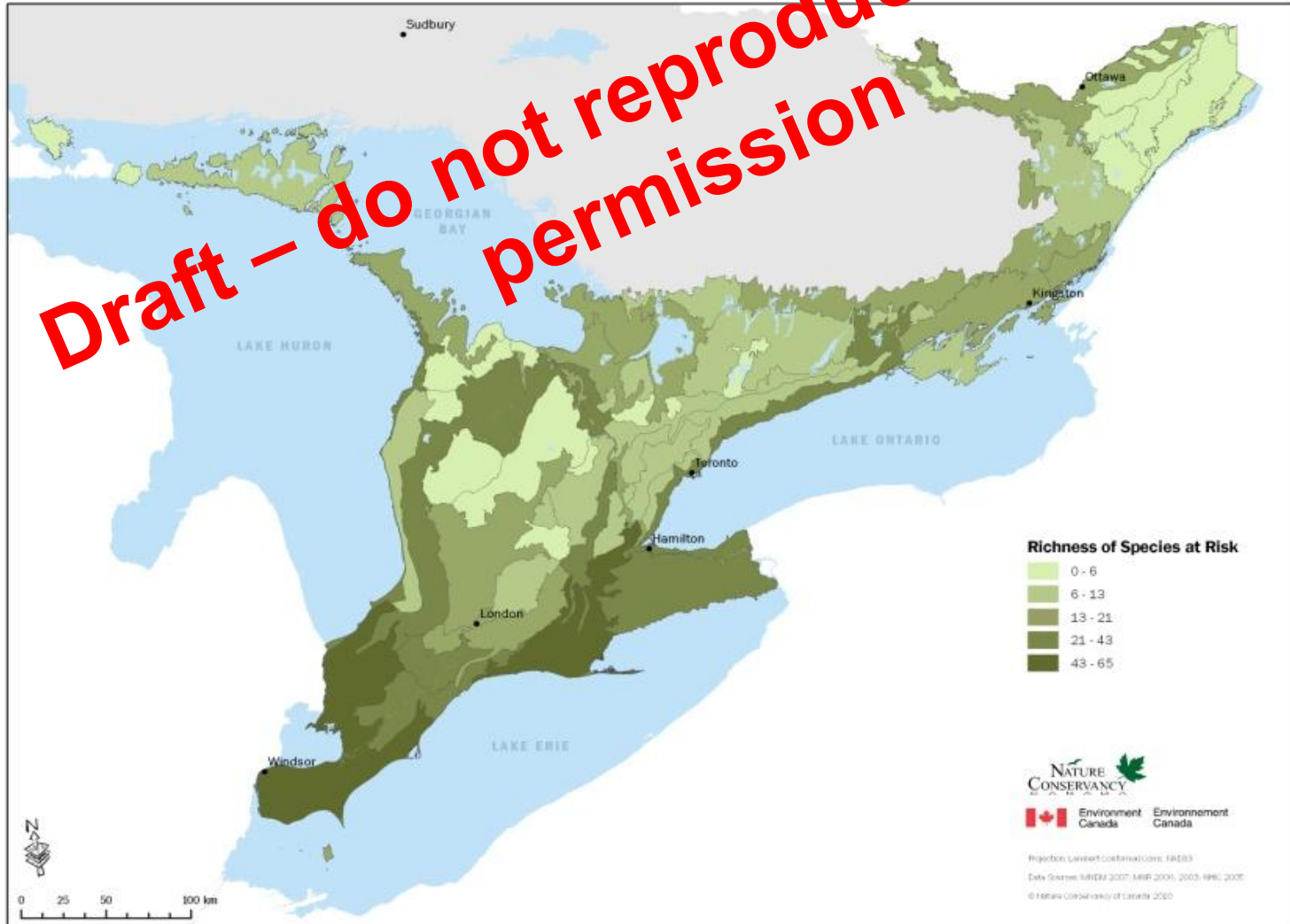
Tier 1 landscape assessment – ecozone scale results

Draft – do not reproduce without permission

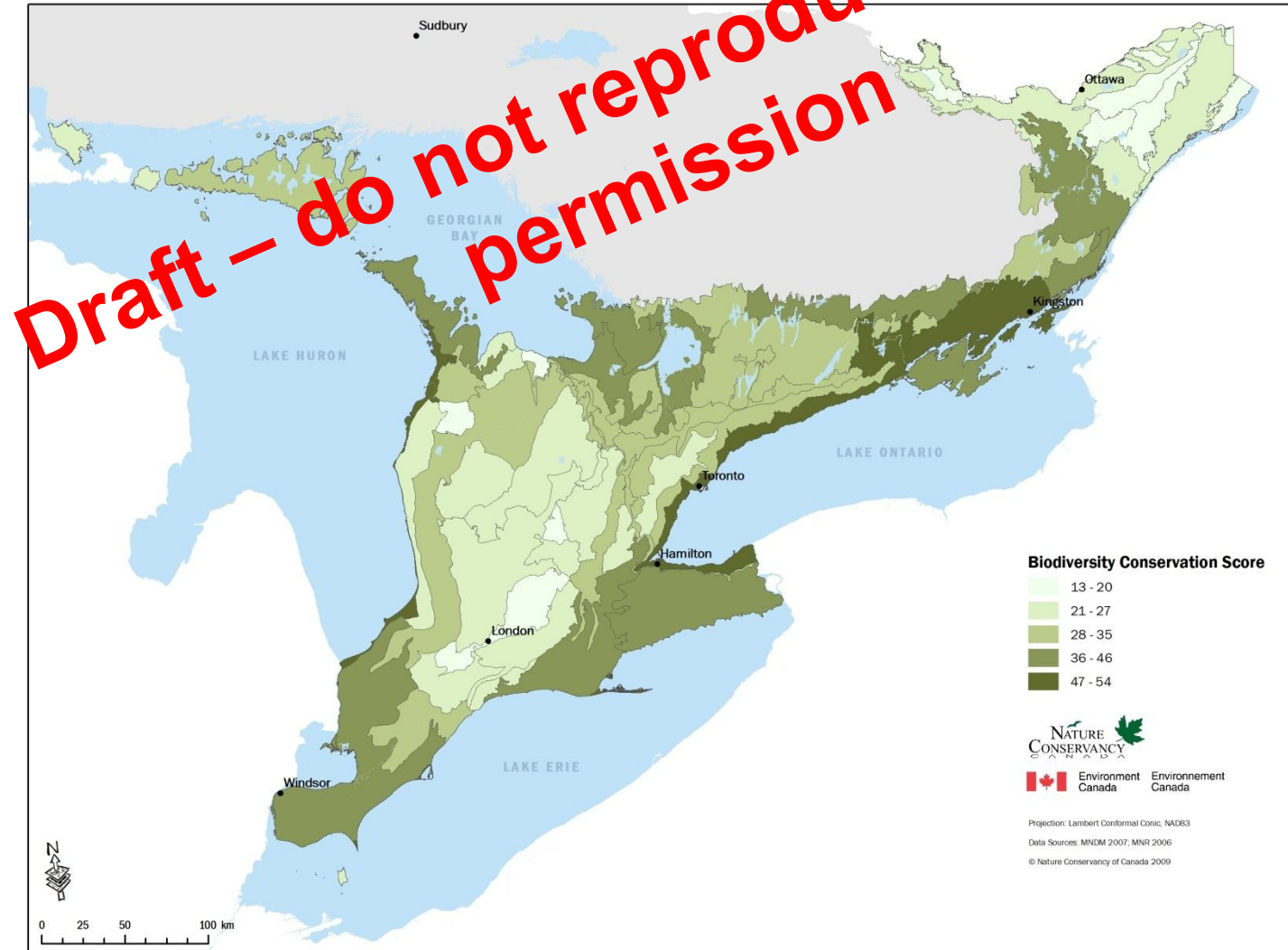


Tier 1 landscape assessment – ecozone scale results

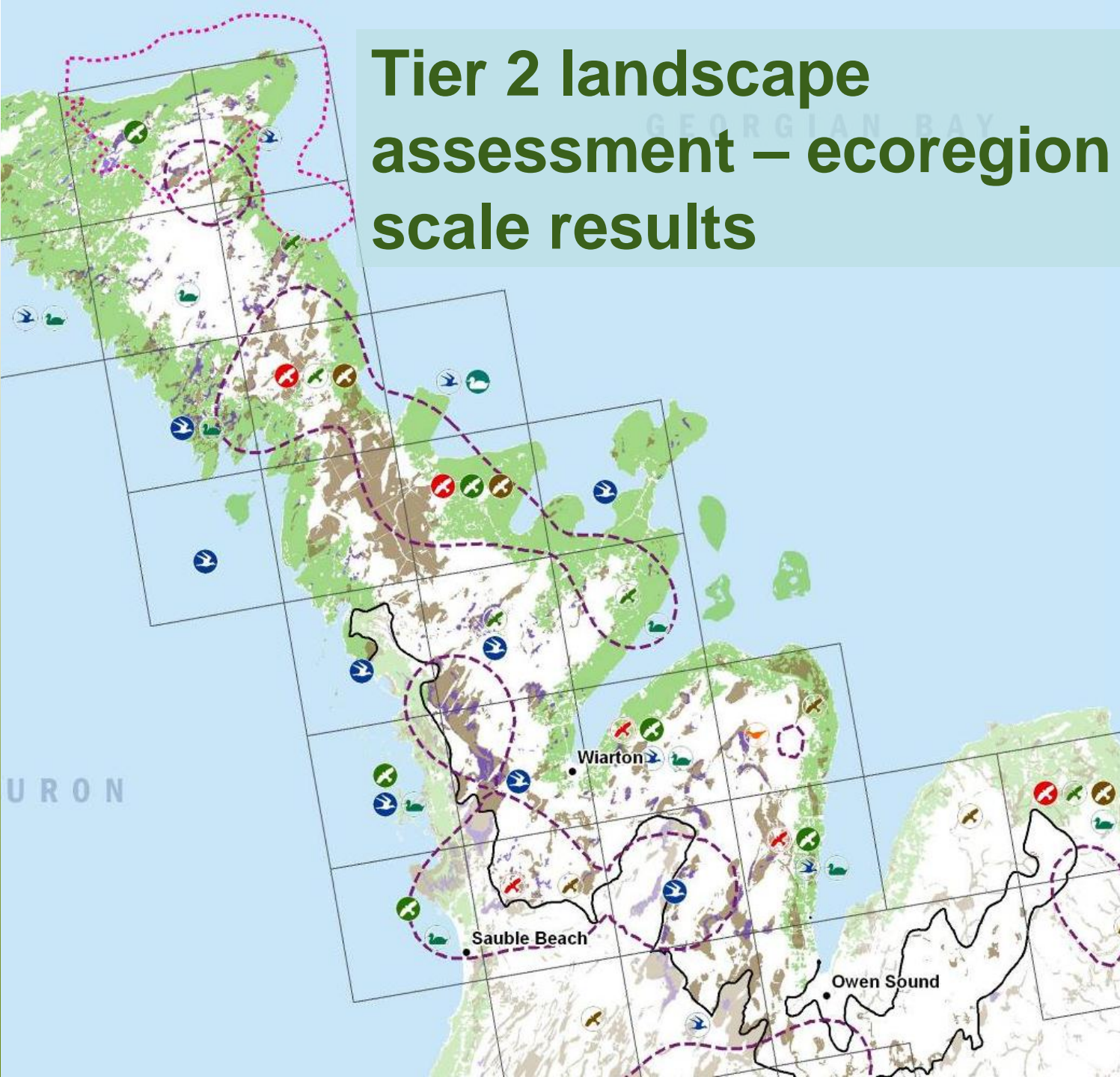
Draft – do not reproduce without permission



Tier 1 landscape assessment – ecozone scale results



Tier 2 landscape assessment – ecoregion scale results



Core Bird Areas

— Bird Species at Risk

Priority Landbird Species

- Very High Relative Density
- High Relative Density

Priority Forest Bird Species

- Very High Relative Density
- High Relative Density

Priority Open Country Species

- Very High Relative Density
- High Relative Density

Priority Shorebird Species

- Very High Relative Density
- High Relative Density

Priority Waterbird Species

- Very High Relative Density
- High Relative Density

Priority Waterfowl Species

- Very High Relative Density
- High Relative Density

Bird Habitat Modelling
(High and Very High Habitat Suitability)

- Landbird Stopover Sites
- Shorebird Stopover Sites
- Waterfowl Stopover Sites

Other Features

- Important Bird Areas

PROJECTION
Lambert Conformal Conic, NAD83

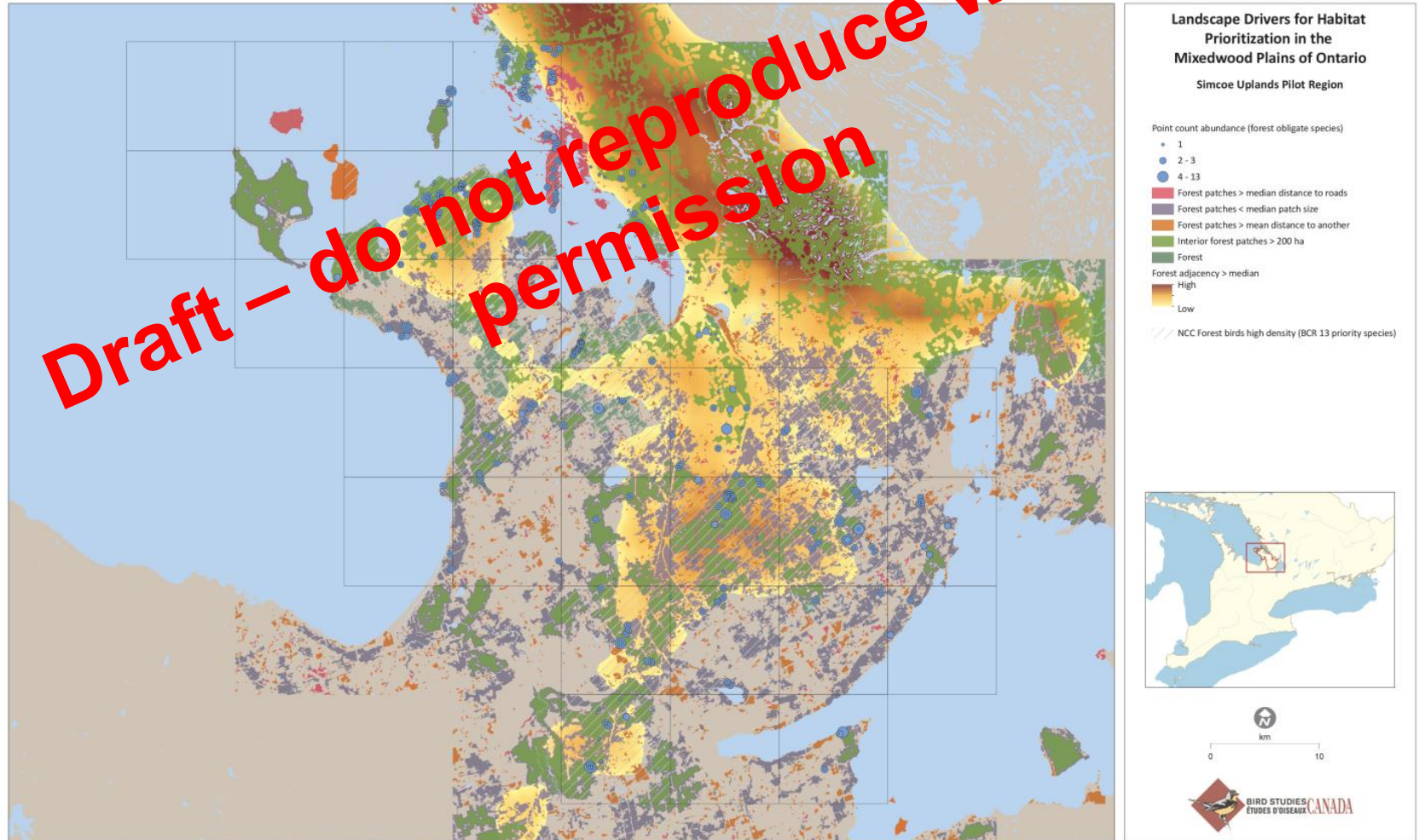
DATA SOURCES
NCC 2010; BSC et al 2008; CWS 2008; MNM 2007;
MNR 2006

DISCLAIMER
The identification of core areas is based on the best available information on species distribution. The location and extent of these areas is subject to change based on new information.

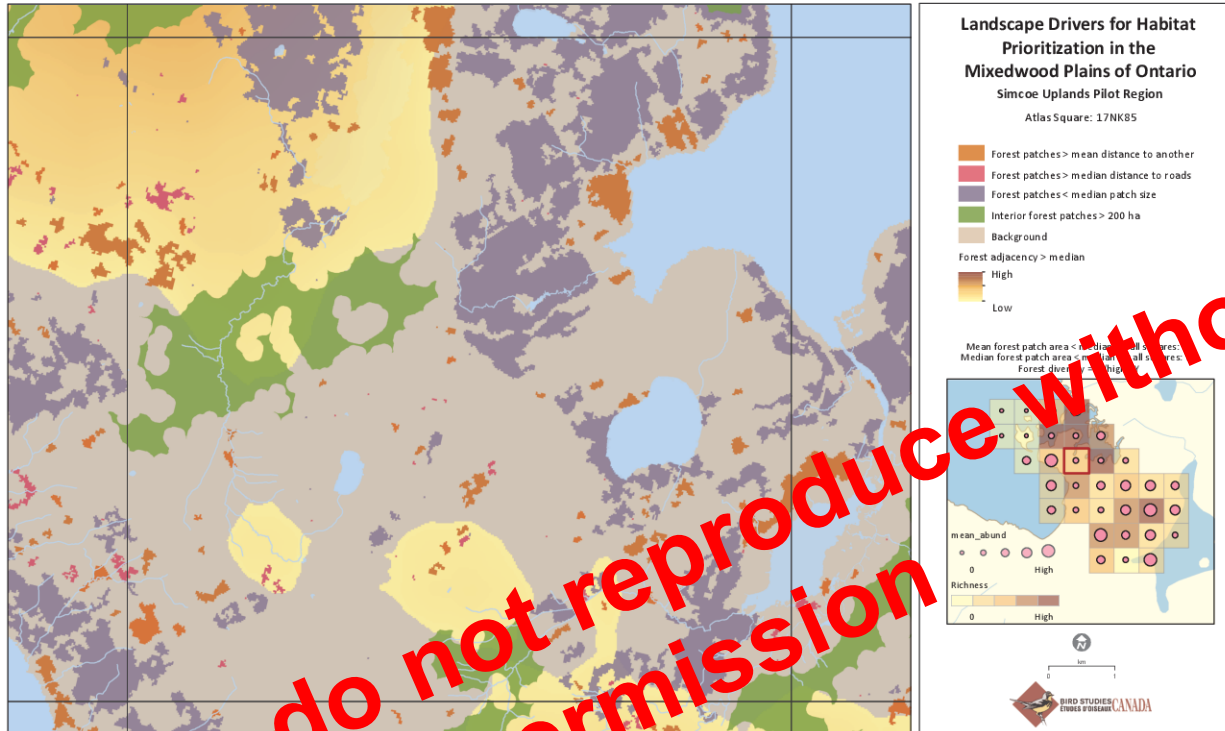


Tier 3 – patch and landscape

Draft – do not reproduce without permission



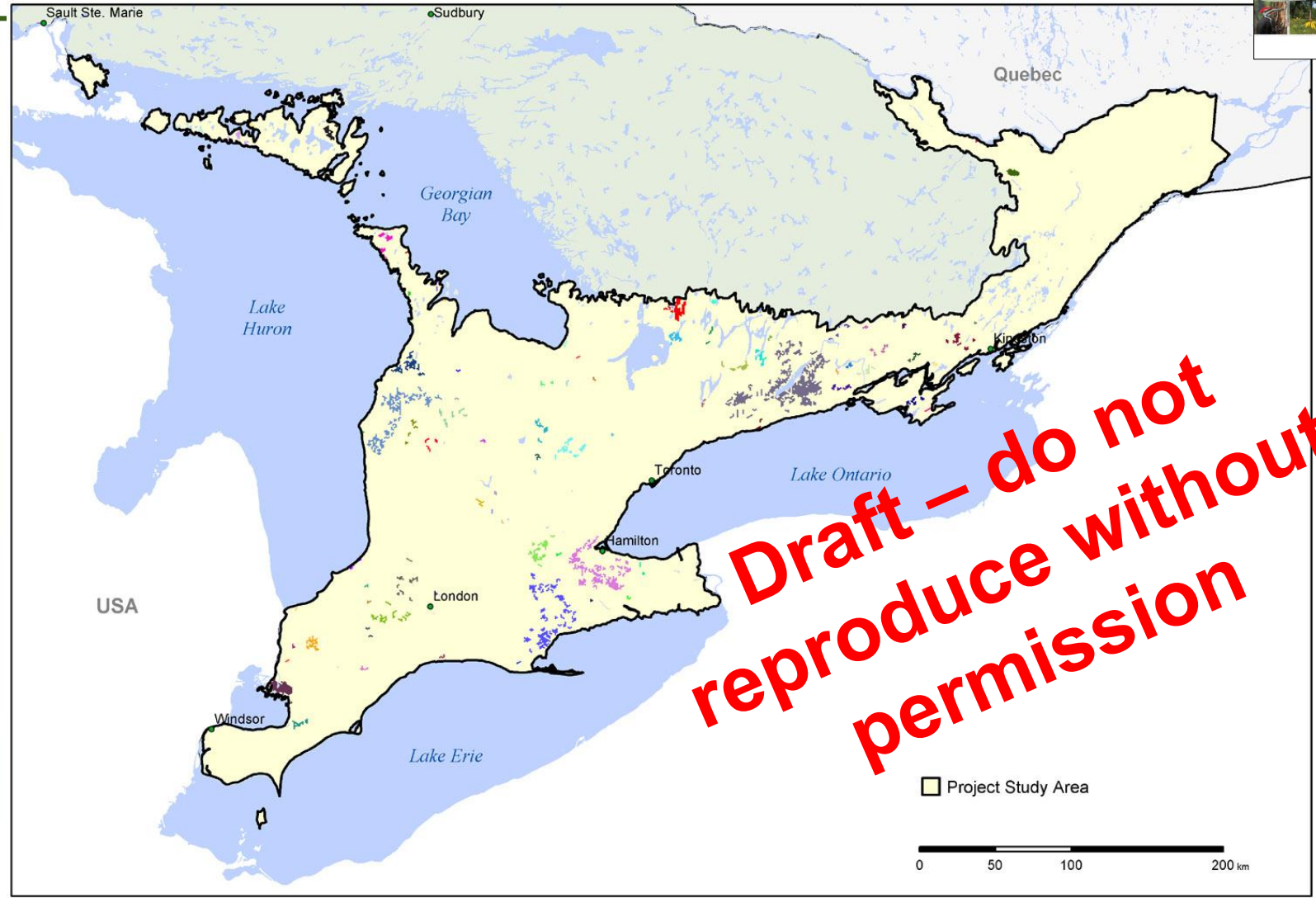
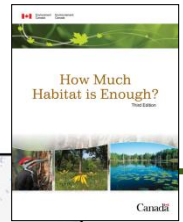
Tier 1 - Combined metrics/atlas square



Draft – do not reproduce without permission



Mapping Existing and Potential Grassland Landscapes: Results



Core focus landscapes

Next

- **Verify existing and potential grasslands mapping**
- **Refine Tier 3 methodology in 2013-14**
- **Internal release of Tier 1 and 2 landscape assessments**
- **Tier 2 landscape assessment for BCR 12 – 2014-15?**
- **Promote HMHE3 with landscape assessment as a conservation plan in the Mixedwood Plains**