



TREES, FORESTS AND WOODLOTS

A Review of the Data Capture

Comparing Data Sets

- Standards via common parameters

Importance

- During data analysis it is important to compare consistent parameters for accurate definition

Factors that create irregularity

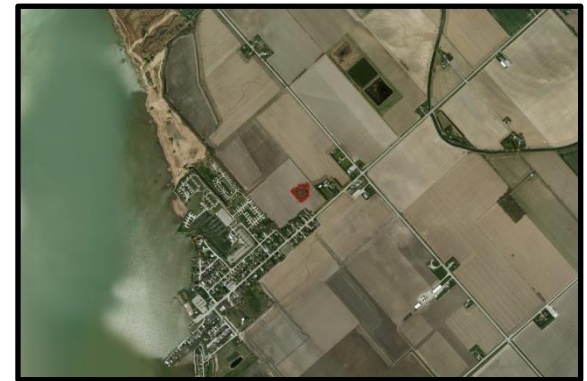
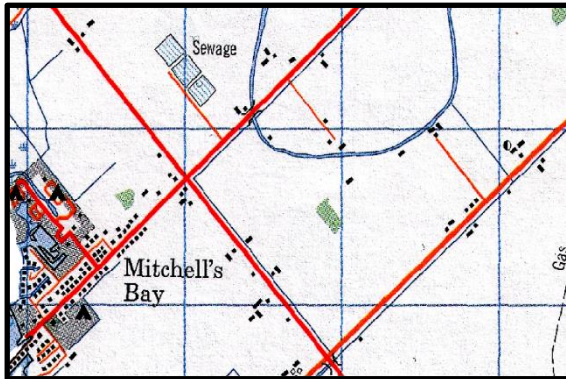
- Technology improvements; older data sets with variable and some unclear parameters
 - Do we include... (conservation land, provincial park land, orchards, windbreaks etc.)?

TREES, FORESTS AND WOODLOTS

1980-1990 Topographic

2001 Black & White

2010 Colour



Definition

Woodland:

- Greater than 0.5 hectares.
- At least 30 metres wide
- Inventory assessed through interpretation of aerial photography at a scale of 1:2000.

Consistent with Ministry of Natural Resources Southern Ontario Land Resources Information System (SOLRIS) Image Interpretation Manual and Middlesex Natural Heritage Study.



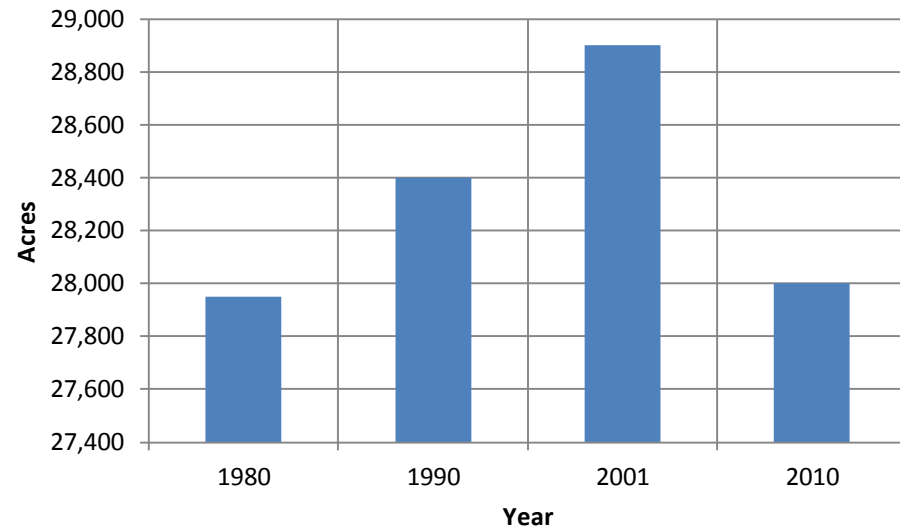
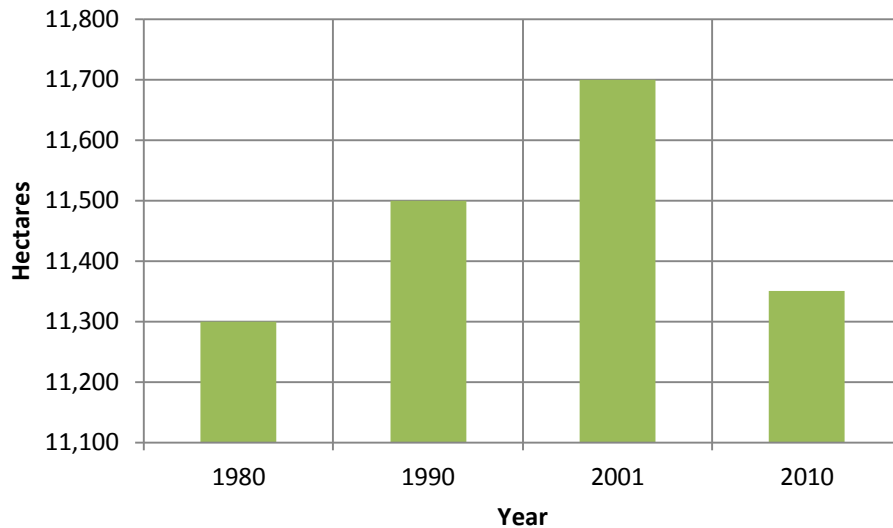
TREES, FORESTS AND WOODLOTS

- Gather imagery from all data sets
- Redefine questionable polygons
- Result is comparable standard by definition

TREES, FORESTS AND WOODLOTS

Observed Trends

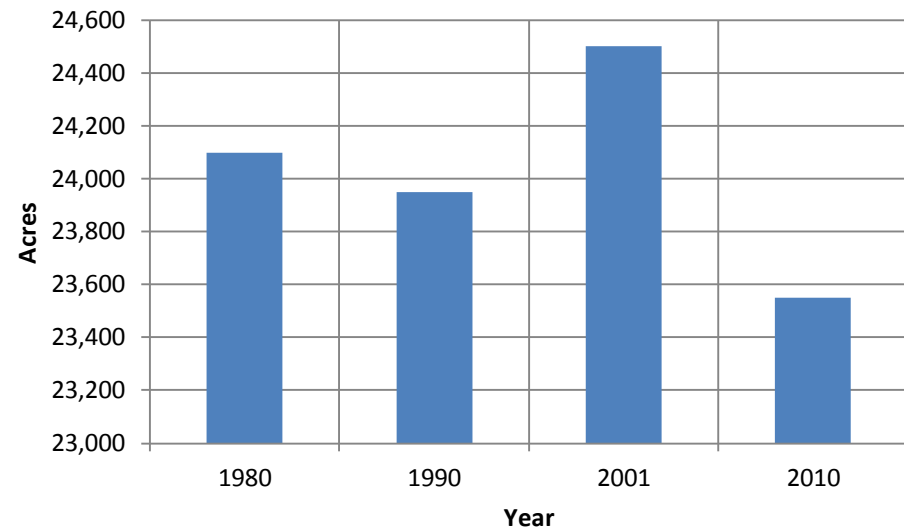
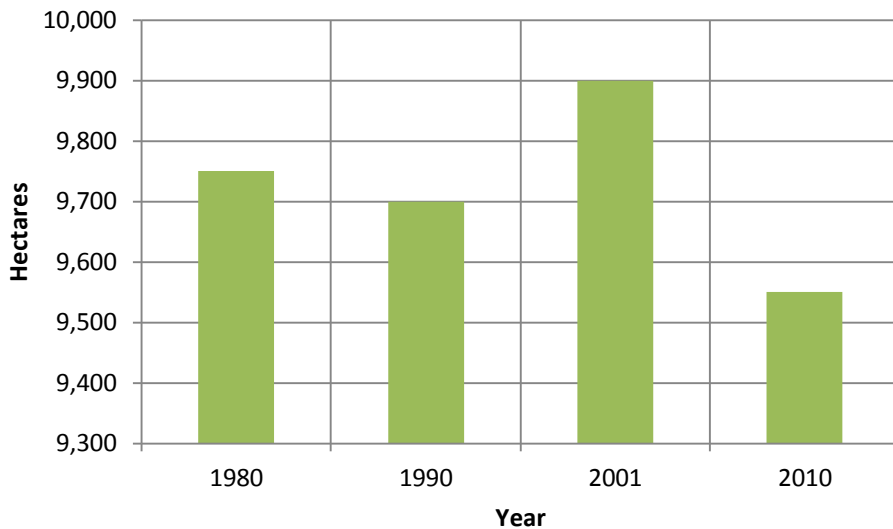
Change in woodlands over time – CK *including* Rondeau and Wheatley Provincial Parks and Moravian First Nation stands at 4.5%.



TREES, FORESTS AND WOODLOTS

Observed Trends

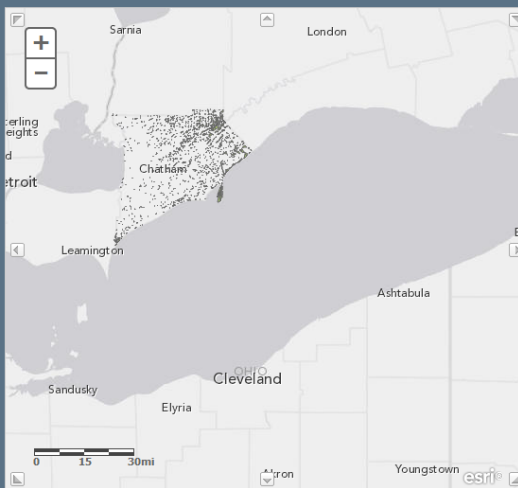
Change in woodlands over time – CK *excluding* Rondeau and Wheatley Provincial Parks and Moravian First Nation stands at 3.78%.



TREES, FORESTS AND WOODLOTS

Chatham-Kent Woodlot Mapping

Chatham-Kent 1990 Woodlots

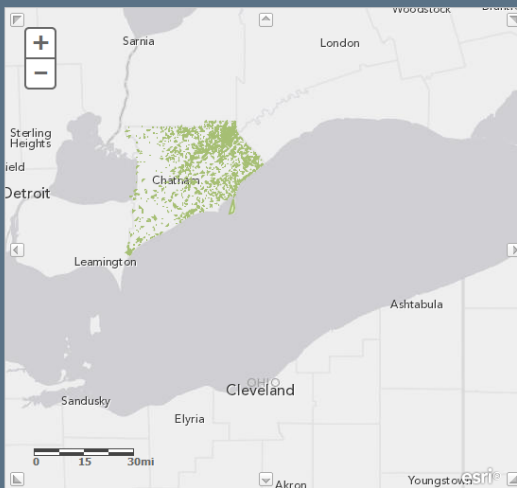


This map displays woodlots within Chatham-Kent. This information was captured by digitizing printed maps from 1990 that were created by the Ministry of Natural Resources. We were able to capture this information with the help of the Lower Thames Valley Conservation Authority.

Total Coverage:
11,500 hectare
28,400 acres



Chatham-Kent 2001 Woodlots

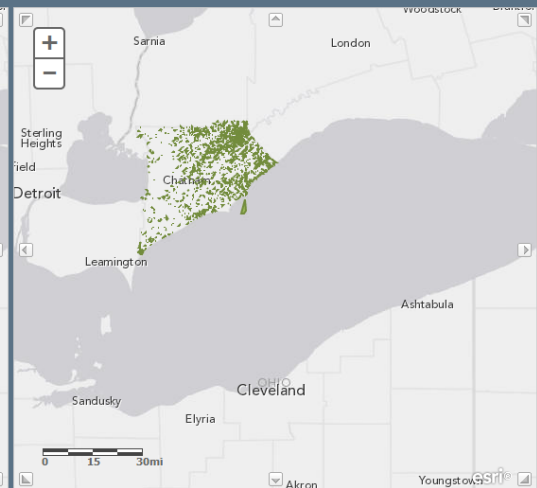


This map displays woodlots within Chatham-Kent. This information was captured using the 2001 aerial photos that were flown in the spring that year. We were able to capture this information with the help of the Lower Thames Valley Conservation Authority.

Total Coverage:
11,700 Hectare
29,000 Acres



Chatham-Kent 2010 Woodlots



This map displays woodlots within Chatham-Kent. This information was captured using the 2010 aerial photos that were flown in the spring and fall of that year as part of the South Western Ontario Ortho Photo project. We were able to capture this information with the help of the Lower Thames Valley Conservation Authority.

Woodlot Coverage:
11,400 Hectare
28,000 Acres



MAP INFORMATION

- Description
- Content
- Legend

SYNCHRONIZE MAPS:

- Scale
- Location



TREES, FORESTS AND WOODLOTS

Data indicates:

- Education and restoration incentives work to increase natural cover
- Without a by-law natural cover is vulnerable and conservation work can be undone quickly



TREES, FORESTS AND WOODLOTS

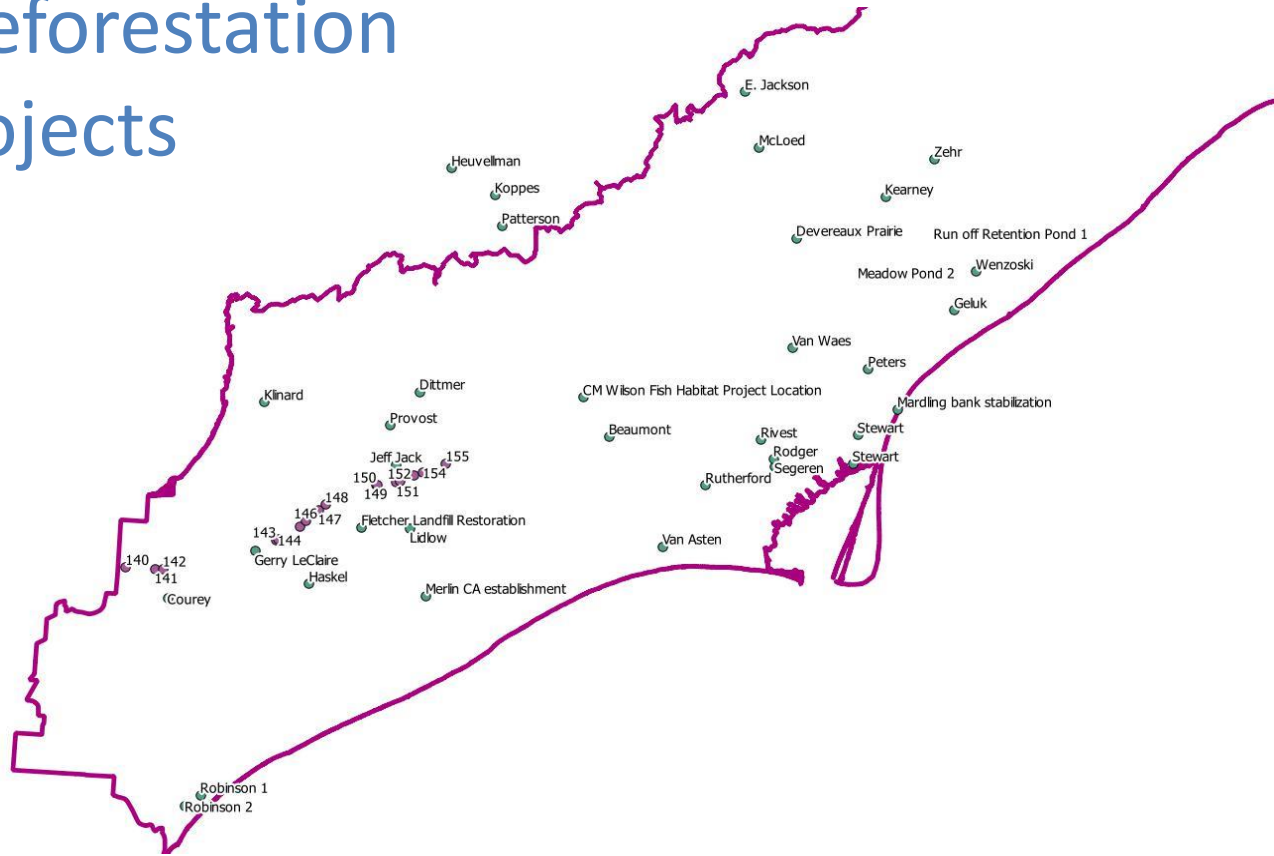
Standards Improve Accuracy

COMPARE HISTORICAL LAND COVER and MONITOR NEW TRENDS

- Now we can monitor Natural Heritage
- Natural Restorations
 - Woodlot
 - Wetland
 - Prairie
- Corridor linkage development
- Invasive species trends and populations
- Trail networks

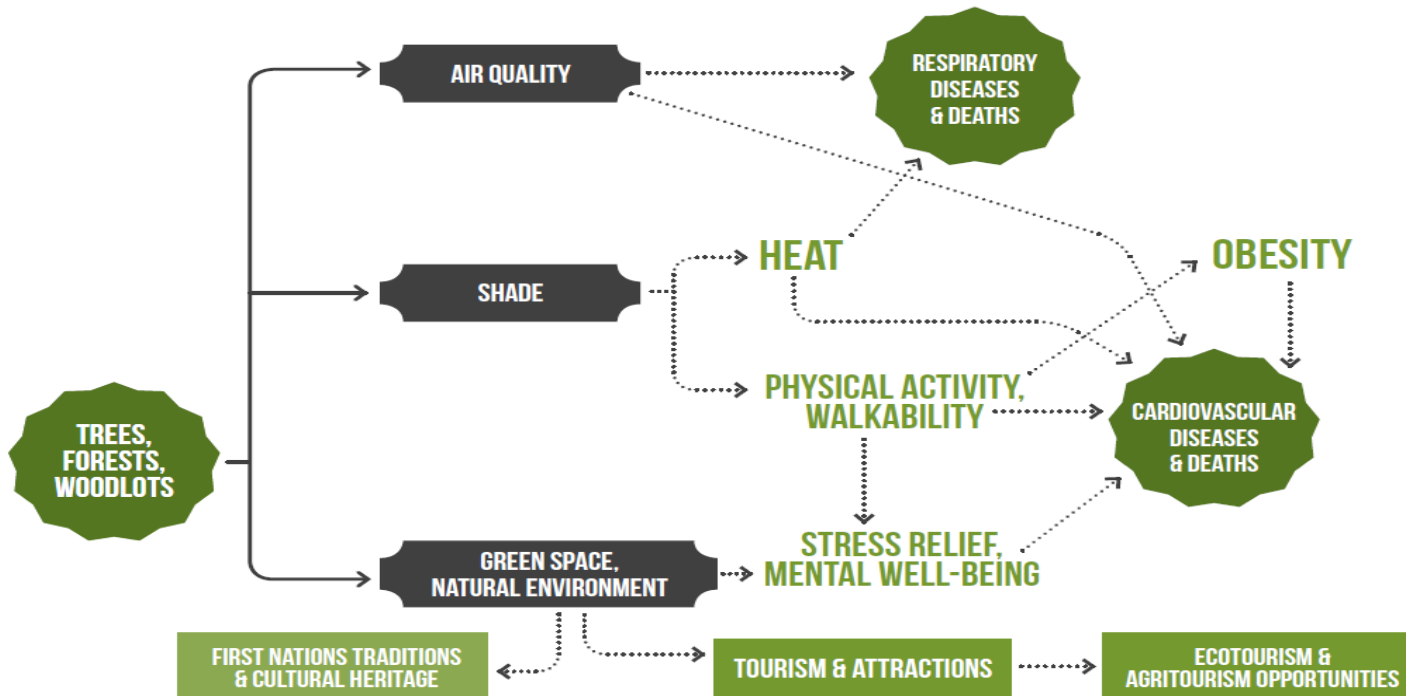
TREES, FORESTS AND WOODLOTS

Recent Reforestation Projects



TREES, FORESTS AND WOODLOTS

IMPACTS OF TREES AND FORESTS ON HUMAN HEALTH AND CULTURE





TREES, FORESTS AND WOODLOTS

BACKGROUND

- January 28, 2013 - Council Meeting
- Notice of Motion from Councilor Parsons “that Council place an immediate moratorium on the clear cutting of forest and tree cover within the Municipality pending the consideration of a woodlot conservation by-law and that such moratorium remains in effect for a period not to exceed six months.”

February 11, 2013 - Council Meeting

- In response to the January 28, 2013 Notice of Motion, Legal Services prepared a by-law to prohibit clear cutting for a period of 6 months.
- Council countered that “the motion regarding the Temporary Clear Cutting By-law be tabled until a Woodlot Conservation By-law comes before Council after community consultation has taken place.”
- March 4, 2013 - Council Meeting
- Council approved an upset limit of \$20,000 to create a Forest Conservation Background and Research document.



TREES, FORESTS AND WOODLOTS

March 25, 2013 - Council Meeting.

- The motion from Councillor Parsons to bring forward the tabled Temporary Clear Cutting By-law for debate and decision was approved.
- The motion to create a moratorium by way of a Temporary Clear Cutting By-law was defeated.



TREES, FORESTS AND WOODLOTS

Report to Council

- On October 21/13 Council unanimously voted in favor of a Policy vs. a By law
- Policy development is ongoing with an expected Report to Council in January 2014



TREES, FORESTS AND WOODLOTS

- **Community Reaction**

- The mere mention of by law created a panic on the landscape.
- A total of 75 deputations were made to Council
- Between October of 2012 and the summer of 2013 over 1200 acres of woodlots disappeared to land clearing that is not reflected in the 2010 data set.



TREES, FORESTS AND WOODLOTS

Policy

- The CK community has never been so engaged in forest cover discussions, this alone creates opportunity
- Conservation Action Plans, through the CCC Outreach Program, will become part of the expected deliverables for the policy.
- A RPF is being hired under contract to educate landowners and promote the benefit relationship between farming and forest cover.



TREES, FORESTS AND WOODLOTS

- Source water quality protection and improvements will be a focus of the action plan.
- The existing Greening Partnership will work with the farm organizations to create a one stop shopping access to all grants and leveraging opportunities
- A total of \$70,000 have been approved and allocated to resource services, promotion and education.